

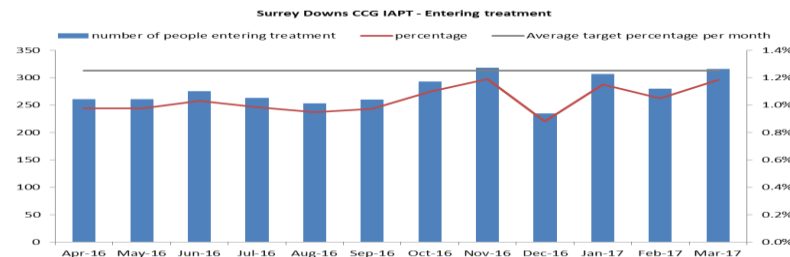
CCG Operating Plan

Improving Access to Psychological Therapies (IAPT) and Dementia - National data

Measure **Description** **Month** **YTD**

Entering Treatment Proportion of people in need of psychological therapies that have entered treatment

Mar-17	YTD
1.2%	12.4%
316 patient	3,322 patient
Target YTD: 10.0%	

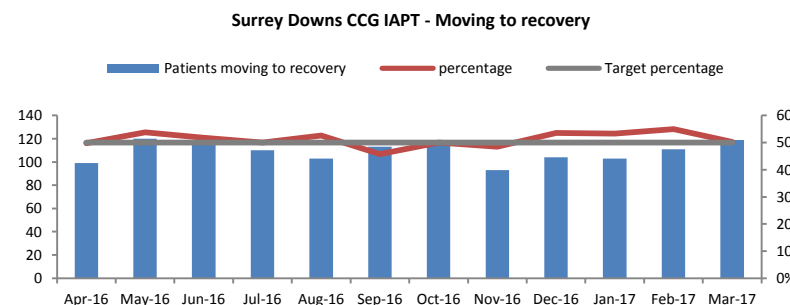


Comments

Surrey Downs CCG's trajectory for people entering treatment equates to a monthly rate of 1.2% over the financial year. The YTD position is 2.4% over YTD Target showing an increase on the number of people entering treatment every month when compared with the 2016/17 planned.

Moving to Recovery Proportion of people who have completed treatment have moved to recovery

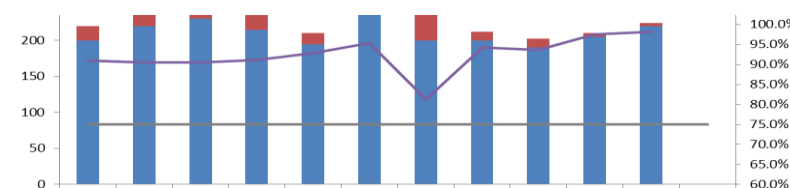
Mar-17	YTD
50.2%	51.1%
119 patient	1,310 patient
Target: 50%	



The CCG has failed to meet the National target in IAPT recovery rate in November with 42.5%; YTD is only 47.2%, however the target was met in May, June and August 2016 (all 50.0%).

Proportion of people treated within 6 weeks of referral Proportion of people that wait 6 weeks or less from referral to entering a course of IAPT treatment against the number of people who finish a course of treatment in reporting period

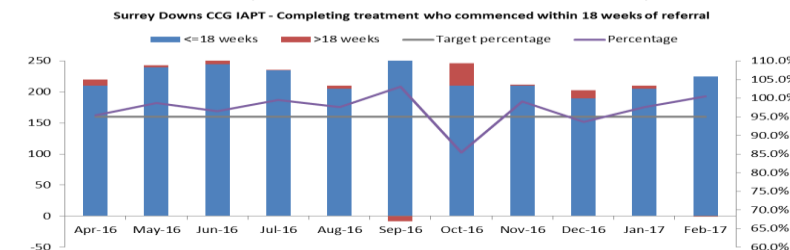
Feb-17	YTD
98.2%	92.2%
12 breaches	195 breaches
Target: 75%	



YTD Feb /2017 Surrey Downs CCG reported, for every month since April 2016, above the National Target 75%.

Proportion of people treated within 18 weeks of referral Proportion of people that wait 18 weeks or less from referral to entering a course of IAPT treatment against the number of people who finish a course of treatment in reporting period

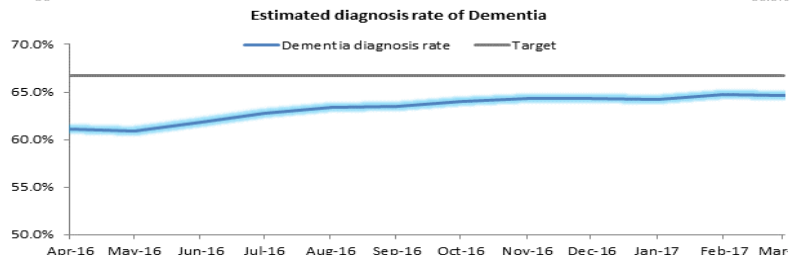
Feb-17	YTD
100.4%	97.0%
75 breaches	75 breaches
Target: 95%	



There was a total of 75 breaches for the YTD at Feb 2016/17. However, the volume of breaches for September 2016/17 and Feb 2016/17 are currently being investigated, hence the performance for February showing above 100%. The Performance team will reissue the report once the September and February figures have been validated, to ensure

Estimated diagnosis rate of Dementia age 65+ Numerator: sum of Dementia Registers 65+
Denominator: Estimated Dementia Prevalence

Jan-17	YTD
64.1%	63.2%
2,640	2,605
Target	
66.7% / 2685 pts	



February 2017 continue to follow the upwards trend from the last 3 Quarters, and Quarter 4 has had the highest estimated diagnosis rates and closing the quarter at 64.4%. (Q1= 61.0%, Q2: 63.0%, Q3: 64.1%)