

Surrey Children's Emotional Wellbeing & Mental Health Services for Children & Young People

Market Engagement Event 15th Oct 2019

WELCOME



Hayley Connor

Director of Children's Commissioning
Surrey County Council

Welcome and Introductions

Programme

09:30	Welcome and Introductions	Hayley Connor, Director of Children's Commissioning, Surrey County Council
09:40	The Story so Far	Charisse Monero, Assistant Director of Children's Commissioning
09:50	Surrey's Child and Young Person Population	Harriet Derrett-Smith, Public Health Principal
10:00	Delivery of CAMHS	Sue Robertson, Associate Director of Strategic Commissioning, Surrey Heartlands CCGs
10:10	New Service Model Proposals	Julia Cramp, Emotional Wellbeing and Mental Health Transformation Programme Lead
10:30	Questions/Discussion	Julia Cramp and Hayley Connor
11:15	Provider questions to Panel	ALL
11:55	Next steps / Timeframes	Claire Sibley and Dagmara Wielemborek, SCC Procurement
12:00	Close	Hayley Connor, Director of Children's Commissioning, Surrey County Council

Our aims for today

Bring the market place together
to explore what can work for
Surrey

and

Help to shape the design of the
future procurement

Explore options of
collaboration and
partnership working

Share and test our current
thinking

Charisse Monero

Assistant Director of Children's Commissioning
Surrey County Council

The story so far

Challenges in supporting Children and Young People's Emotional Wellbeing and Mental Health

- In line with national picture, demand for CAMHS has increased in recent years
- Recognition that a strategic approach is needed to drive change across the children and young people mental health system – but not easy to deliver (CAMHS is a system not an individual service)
- How to prioritise early intervention (both promotion of good mental health and addressing of issues when they first emerge) in a difficult financial climate for schools and other public bodies

Vision for the Child and Adolescent Mental Health System in Surrey

“To develop a culture of emotional wellbeing and mental health support for children and families that is based on strengthening early intervention and prevention and building resilience. We will listen to and work in partnership with our community to give children and young people the best start in life”

Our Priorities for the Child and Adolescent Mental Health System in Surrey

As set out in 'A Thriving community of children and young people in Surrey: A strategy for their emotional wellbeing and mental health, 2019-2022';

- Early Intervention and community support
- Collaborative working
- Creating a navigable system
- Communication with children, young people and parents
- Environmental design
- All documentation and further information is available at:
<http://www.guildfordandwaverleyccg.nhsn.uk/info.aspx?p=7>

Transformation Programme

Access

Early Intervention

**Social, Emotional
& Mental Health
(SEMH)**

Vulnerable Groups

Crisis

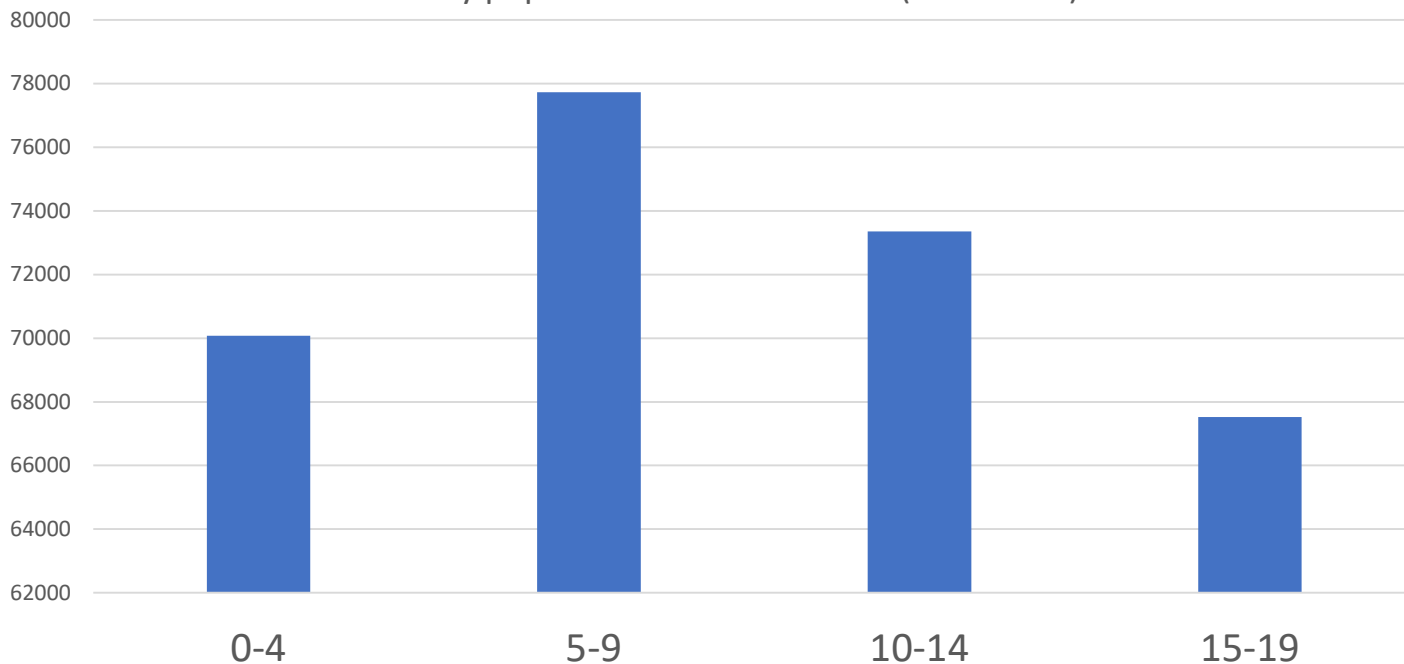
Enabling Workstreams: Comms & Engagement, Contracts, Finance & BI, Infrastructure (Workforce, Estates, HR, IG,IM&T)

Harriet Derrett-Smith

Public Health Principal
Surrey County Council

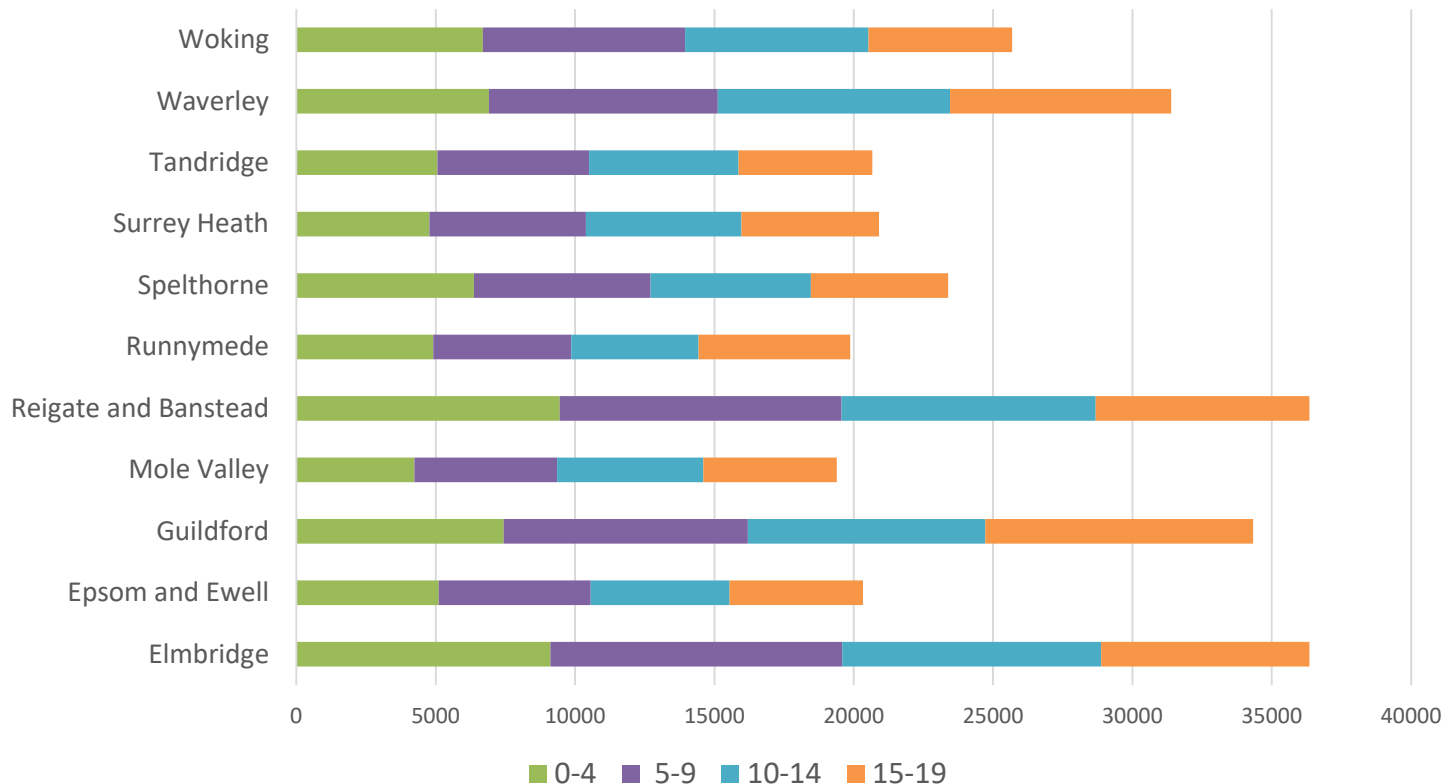
Surrey's child and young person population

Surrey population 0-19 as of 2018 (thousands)



Approximate total number of CYP in Surrey is 280,000 (that is almost 1 in 5 of the population).

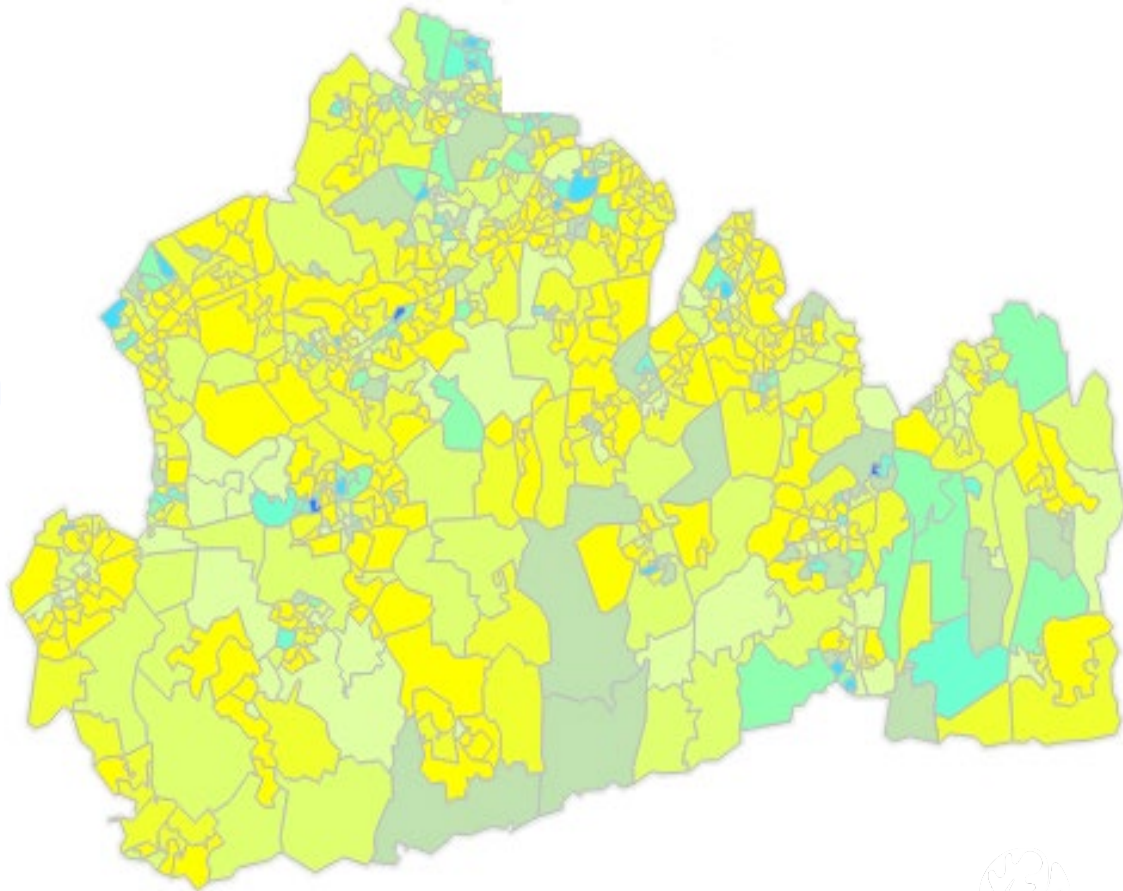
Surrey population 0-19 by district and borough as of 2018



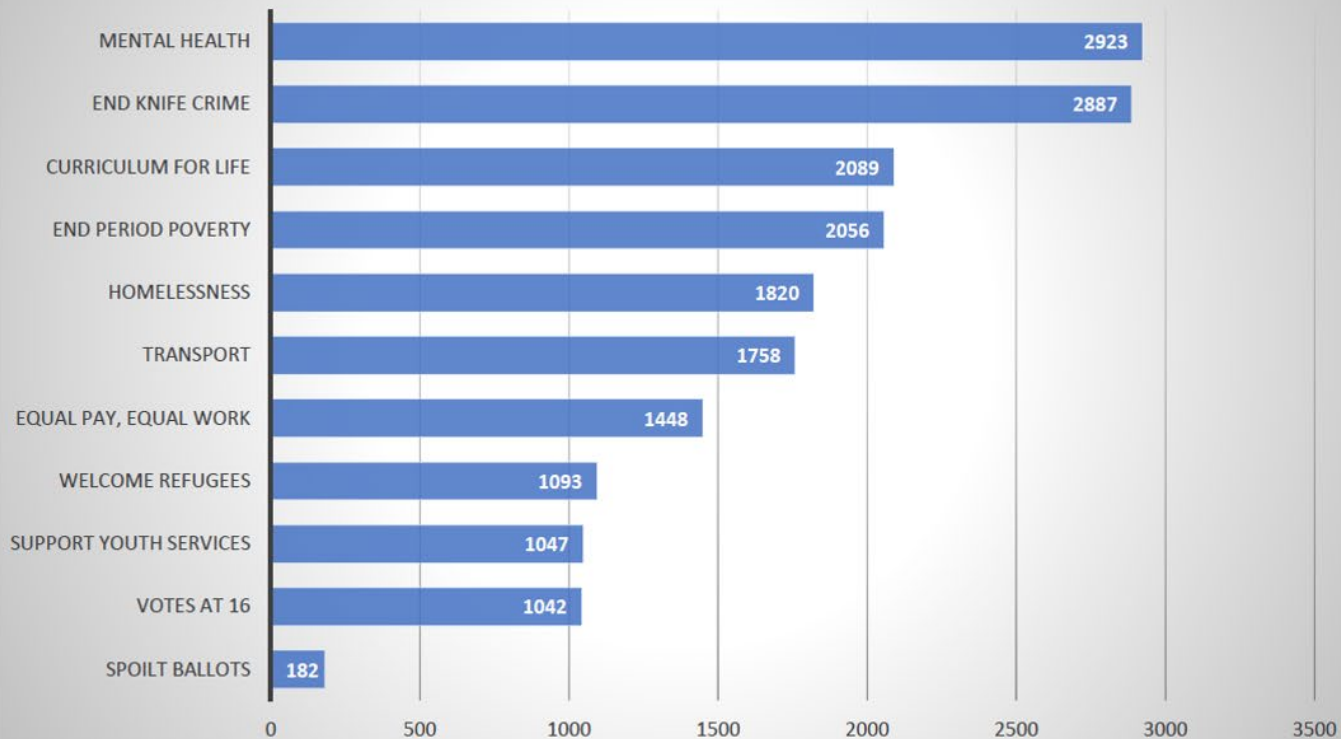
Deprivation in Surrey



- Areas of notable deprivation include;
- Staines/Egham
- Camberley
- Pockets of Guildford
- Pockets of Epsom and Ewell
- South Tandridge



Surrey's Make Your Mark Results 2018



What are the top priorities for change according to 11-19 year olds in Surrey?

- 1 – Mental Health
- 2 – Knife Crime
- 3 – A Curriculum for Life
- 4 – Period poverty

Risk and protective factors for CYP's mental health

RISK FACTORS

- ✗ Genetic influences
- ✗ Low IQ and learning disabilities
- ✗ Specific development delay
- ✗ Communication difficulties
- ✗ Difficult temperament
- ✗ Physical illness
- ✗ Academic failure
- ✗ Low self-esteem

- ✗ Family disharmony, or break up
- ✗ Inconsistent discipline style
- ✗ Parent/s with mental illness or substance abuse
- ✗ Physical, sexual, neglect or emotional abuse
- ✗ Parental criminality or alcoholism
- ✗ Death and loss

- ✗ Bullying
- ✗ Discrimination
- ✗ Breakdown in or lack of positive friendships
- ✗ Deviant peer influences
- ✗ Peer pressure
- ✗ Poor pupil to teacher relationships

- ✗ Socio-economic disadvantage
- ✗ Homelessness
- ✗ Disaster, accidents, war or other overwhelming events
- ✗ Discrimination
- ✗ Other significant life events
- ✗ Lack of access to support services



Child



Family



School



Community

- ✓ Secure attachment experience
- ✓ Good communication skills
- ✓ Having a belief in control
- ✓ A positive attitude
- ✓ Experiences of success and achievement
- ✓ Capacity to reflect

- ✓ Family harmony and stability
- ✓ Supportive parenting
- ✓ Strong family values
- ✓ Affection
- ✓ Clear, consistent discipline
- ✓ Support for education

- ✓ Positive school climate that enhances belonging and connectedness
- ✓ Clear policies on behaviour and bullying
- ✓ 'Open door' policy for children to raise problems
- ✓ A whole-school approach to promoting good mental health

- ✓ Wider supportive network
- ✓ Good housing
- ✓ High standard of living
- ✓ Opportunities for valued social roles
- ✓ Range of sport/leisure activities

Sue Robertson

Associate Director of Strategic Commissioning
Surrey Heartlands CCGs

Current delivery of CAMHS

Current SABP CAMHS Contract

- Duration 1st April 2016 – 31st March 2019 – Extended by 2 years to 31st March 2021
- A number of commissioning organisations are involved in a variety of services delivered under the single contract.
- There are approximately 12 different service specifications contained within the contract which is split into 2 elements – Targeted and Specialist Services.
- The contract value is c£14M and a further c£3.5M of Transformation funding supports contracted provisions and additional services.

Current CAMHS Services

SABP
Sub
Contracts:
EIKON
YMCA
Learning
Space
Relate
Step by
Step
NAS
Barnardos
ZenZone

SINGLE POINT OF ACCESS

Tier 4
NHSE
Contracts

Targeted CAMHS (Tier 2)
managed by Surrey County Council on
behalf of SCC and the Surrey CCGs

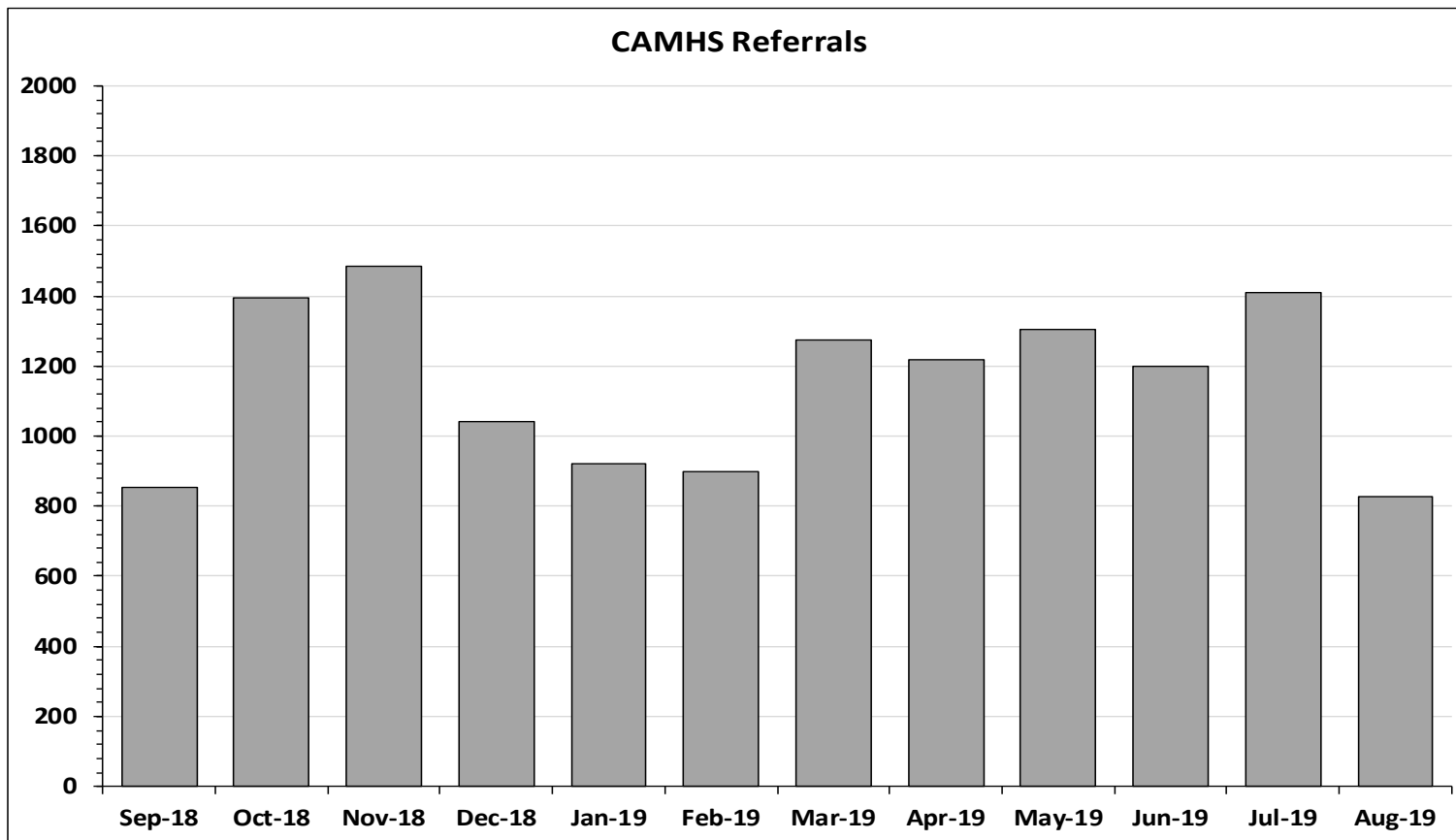
- Primary Mental Health workers supporting schools
- 3Cs - Looked After Children
- Post Order Children
- CAMHS Care Leavers
- Extended HOPE (Crisis)
- STARS (Sexual Trauma and Recovery Support)
- PIMHS (Parent and Infant MH Service)
- Behaviour Pathway for children with Neurodevelopmental Disorders (BEN)

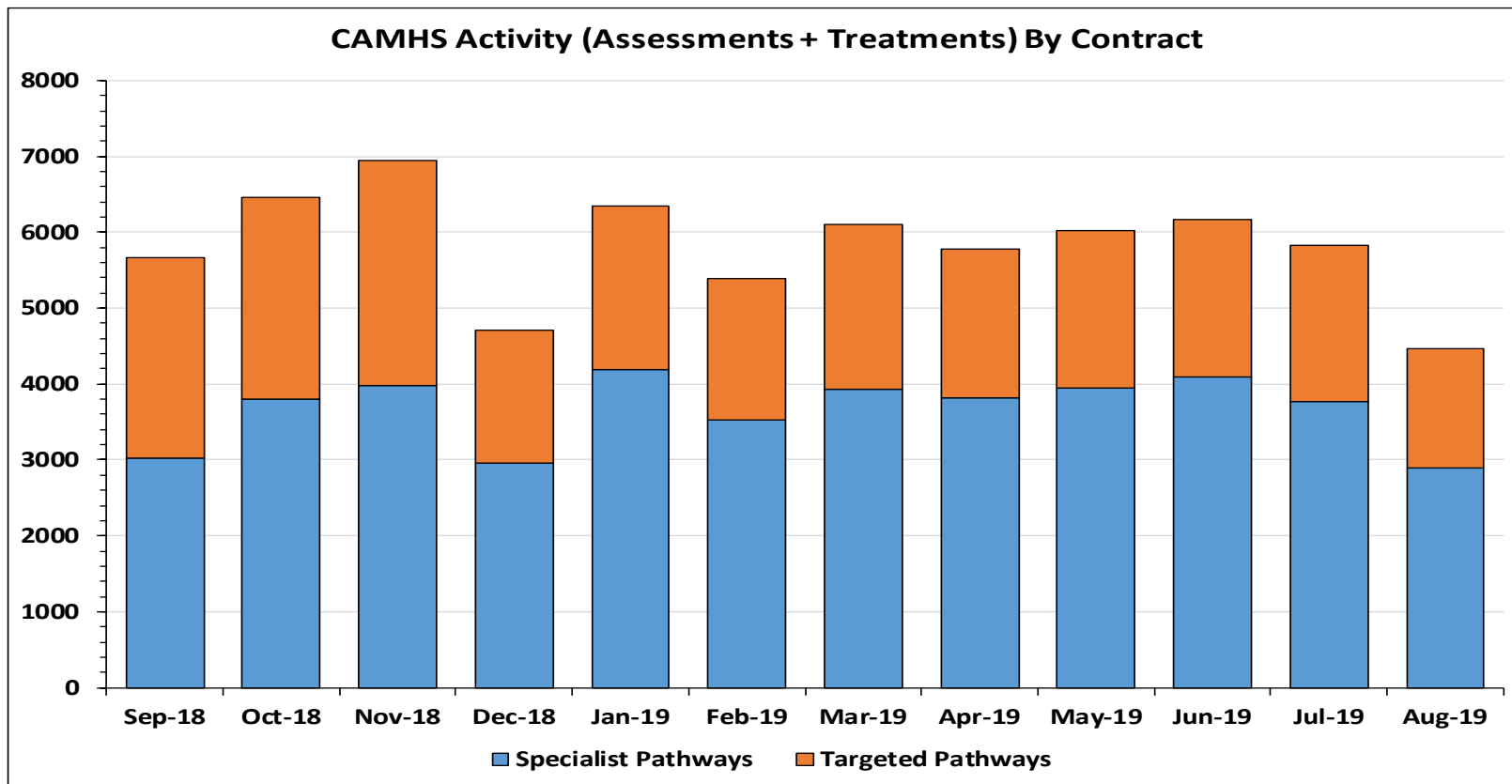
Specialist CAMHS (Tier 3) is managed by
NHS Guildford and Waverley CCG on behalf
of the Surrey CCGs

- Community CAMHS
- Children and Young People Learning Disability Service
- Eating Disorders service
- Mindful Service (for 16-25 year olds)

TRANSFORMATION FUNDED SERVICES
Education Psychologists
MH Practitioner UASC Care Leavers LAC
PACA Network
MH Practitioner Looked after Children - out of county
Transition
HOPE care, education and treatment reviews (CETR), to improve access and
HOPE Training
CYP Haven
Bereavement service
Eating Disorder Service - Transformation Funded, but seen as part of Specialist
CAMHS Youth Advisers
Mind Waves - MH Support for vulnerable children
Counselling grant agreement
IAPT backfill
Everybody's Business
CAMHS Accelerator Sites
Music to my Ears
SSHAW
Smart Moves
Challengers
N3 support for 3rd sector
Bereavement service
DBT Training
The Big chat
Extended HOPE Service - Transformation Funded, but seen as part of Targeted
Perinatal mental health nurse - midwife
Children's Intensive Support Service
Paediatric Liaison Nurses
Animal Therapy

33 x Transformation funded Schemes



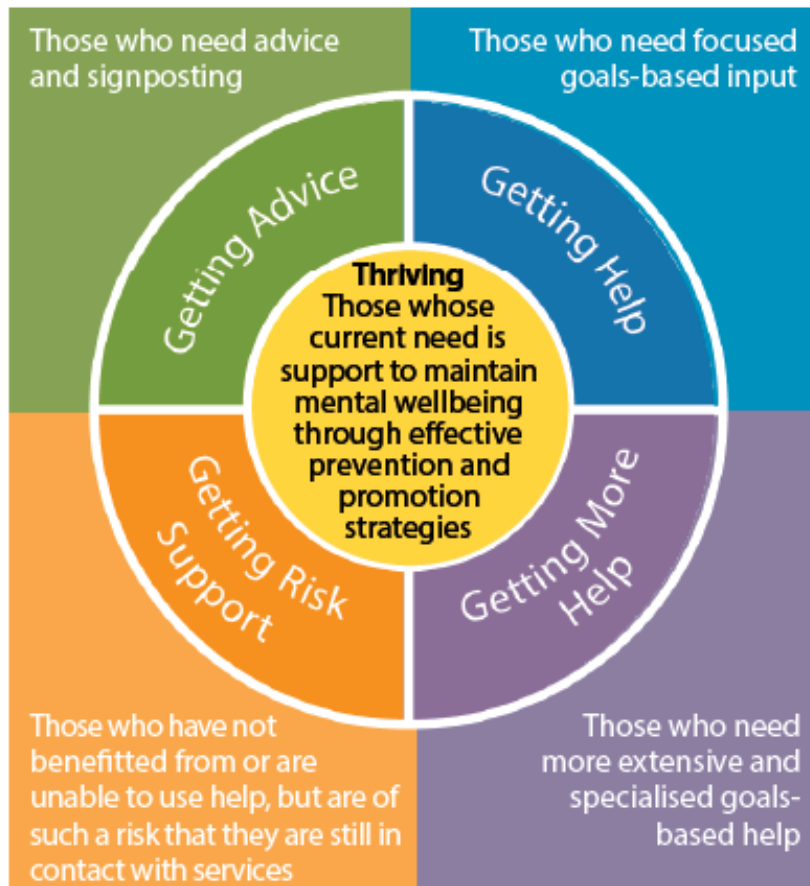


Julia Cramp

Programme Lead – EWMH Transformation
Programme
Surrey County Council

New Service Model Proposals

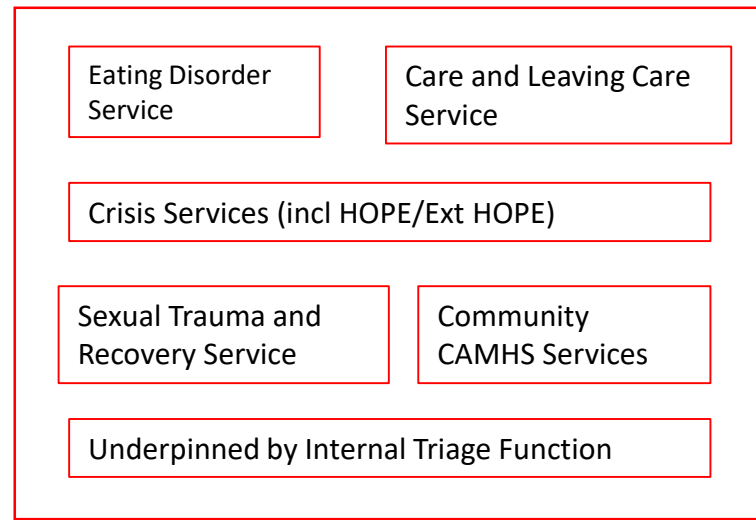
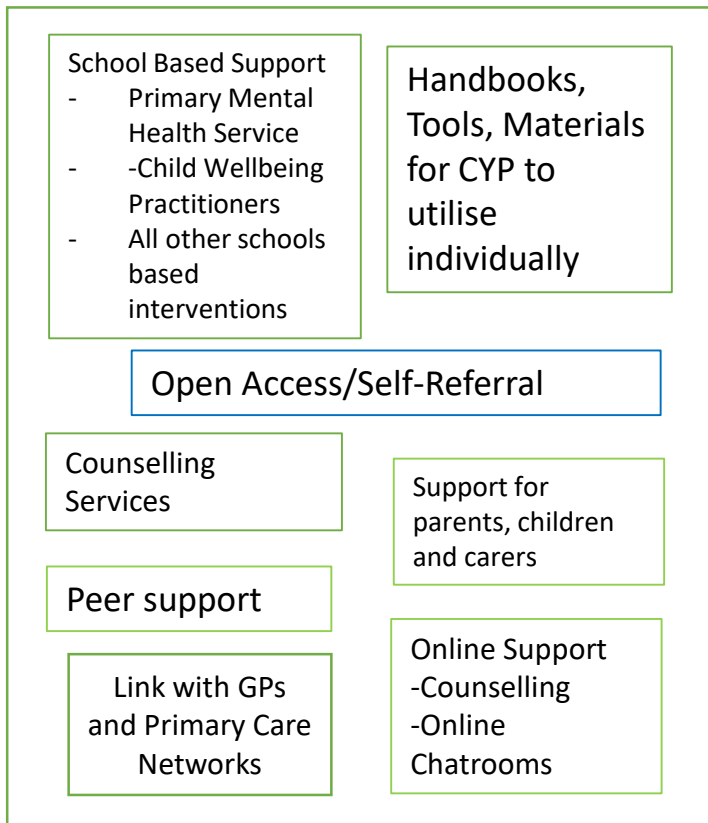
The THRIVE Framework



New Model Proposals

- Use of the Thrive framework with all professionals working with children and young people aiming to help them 'thrive' and 'flourish'
- A much stronger focus on early intervention, given the rise in numbers of children and young people with anxiety and low mood
- Providing easier access to help and support, for example, through digital innovations and encouragement of self-referral
- More support built around groups of schools
- Using views of children, young people and parents to lead to continuous service improvement
- Link with adult wellbeing and mental health services to ensure continuity of mental health support for young people in CAMHS when they reach adulthood

Proposed Service Model



Early Intervention Element

- As part of prioritising early intervention, commissioners recommend a specific proportion (to be agreed) of the overall financial envelope should be ring-fenced for Early Intervention service.
- Early Intervention needs to provide a range of different types of support, some of which will be online/digital and some face-to-face
- Support parents/carers and extended family to help their child/young person as well as linking families to wider support available in their community
- Build some support around clusters of schools to provide every school and college with some dedicated consultation/support – with fast-tracking of requests for support to specialist mental health services when needed.

Specialist CAMHS

- Commissioners propose that these services make up the different elements of what is to be seen as the Specialist CAMHS section of the contract.
- It is expected the incoming provider will deliver the services listed (right) as a minimum for the clinical CAMHS service.
- All of these services are already delivered.

SPECIALIST CAMHS

Eating Disorder Service

Care and Leaving Care Service

Crisis Services (incl HOPE/Ext HOPE)

Sexual Trauma and Recovery Service

Community CAMHS Services

Underpinned by Internal Triage Function

Neurodevelopmental Diagnostic Assessment Service

- Commissioners are proposing that there is a Neurodevelopmental Diagnostic Assessment Service for children aged over 6 as a distinct element of the re-commissioning.
- A diagnostic service needs to be clearly separated out from specialist CAMHS with its own pathway and access point.
- Children and young people with neurodevelopmental difficulties do not all require support from specialist CAMHS but should have access to this when needed. Early support for potential ASD and ADHD should be part of Early Intervention and funding for this support included within the overall financial envelope for Early Intervention.

Initial Commissioning Assumptions

- CAMHS Transformation Fund £ forms part of the financial envelope for procurement
- New Contract(s) should be at least five years in length and NHS T&Cs
- Contract(s) will be jointly managed by Local Authority and Health commissioners
- Service model to include distinct elements but linked together
- Early Intervention is the key to the new service model

Indicative Financial Envelope

- Total indicative financial envelope is circa £17.5m per annum.
- This includes current Targeted and Specialist contract values plus local CAMHS Transformation Funding.
- Contract(s) to commence in April 2021.

What are commissioners looking for?

An organisation(s) that;

- Works with strategic commissioners across the Local Authority, Clinical Commissioning Groups (as well as NHS England) and other providers to continuously develop and improve services over the life of the contract.
- Recognises that there will be a need to develop and change staffing and practice to focus more on early intervention across the contract.
- Makes the most of new technology to increase levels of support that can be offered in a large, rural county.
- Recognises the limitations of a medical service model and operate a service model which sees children and parents as experts on their own lives and fully engages them in finding solutions to reduce impact of mental distress on their daily lives.
- Works with voluntary, community and faith sector as equal partners in supporting children and young people's emotional wellbeing and mental health.

Procurement Questions

- What are views on the three service elements and whether these should be procured as a single contract or as separate lots?
- Does a five year contract with potential to extend sound workable to providers?
- How can we encourage continuous development and flexibility throughout the range of services through the lifetime of the contract?
- If there are separate lots, how can we ensure that the clinical service and the early intervention partners work together effectively?
- What are the challenges and opportunities of a “separate” Neurodevelopmental Diagnostic Assessment service in this model?

Service Questions

- What type of support could be available within early intervention services?
How should this support be accessed?
- How can we deliver the aspiration for more use of on-line/digital resources so that children, young people and parents can get advice/access self-help whenever they need it?
- How can we embed the THRIVE principles in our work?
- How can we provide better support for children and young people who are not in school?
- Should all support for mild to moderate mental health difficulties sit within Early Intervention (including support based around groups of schools)?

Hayley Connor

Director of Children's Commissioning
Surrey County Council

Feedback

Claire Sibley

Strategic Procurement Manager
Surrey County Council

Hayley Connor

Director of Children's Commissioning
Surrey County Council

Charisse Monero

Assistant Director of Children's Commissioning
Surrey County Council

Julia Cramp

Programme Lead – EWMH Transformation Programme
Surrey County Council

Sue Robertson

Associate Director of Strategic Commissioning
Surrey Heartlands CCGs

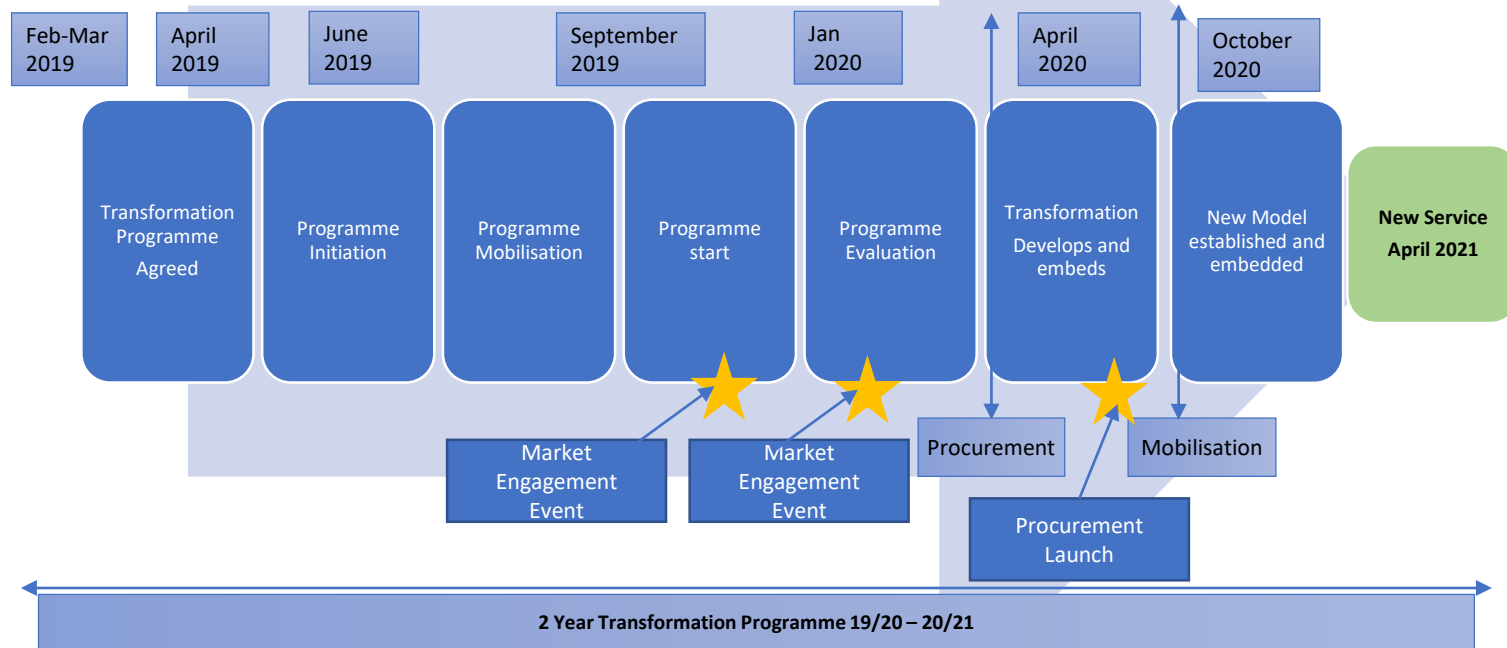
Panel

Claire Sibley

Strategic Procurement Manager
Surrey County Council

Welcome and Introductions

Transformation and Procurement Timelines



Procurement Timetable

TASK	TIMETABLE
Go Live of the Accelerator Sites	September 2019
Work of 'Strategic Commissioners' group to agree high-level principles for specification.	September 2019 - December 2019
Market Engagement Event	15th October 2019
Agreement from all parties of new model of delivery of EWMH	December 19
OJEU notice released	March 2020
Publishing documentation on In Tend	April 2020
Tender evaluation/ moderation	August 2020 - October 2020
Internal Sign offs	August 2020 - October 2020
Mobilisation	October 2020 - March 2021
Go live	1 April 2021

Next Steps

- Feedback to be collated and fed into Commissioner discussions
- Notes from today to be posted on Guildford and Waverley CCG Website
- Planning to have another engagement event in the beginning of 2020
- Procurement launch event in April

Hayley Connor

Director of Children's Commissioning
Surrey County Council

Close

